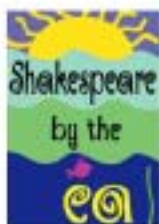


Much Ado About Nothing



in association with



City of Los Angeles Department
of Recreation and Parks.



15th District Councilwoman
Janice Hahn

Much Ado About Nothing directed by Mark Piatelli
Macbeth directed by Anna Andersen
Produced by Lisa Coffi

JUNE 20-AUGUST 17

San Pedro, Rancho Palos Verdes, Hermosa Beach, Torrance,
Wilmington, Manhattan Beach, Signal Hill & Newport Beach

Don't be a fish out of water

GET HOOKED on Shakespeare by the Sea

ONE YEAR
to Plan,
TWO
Productions,
NINE weeks,
and **TWENTY**
SEVEN
Performances
- and it's
all FREE!

S	M	T	W	T	F	S
16	17	18	19 JUNE	20 ADO	21 ADO	22 ADO
23	24	25	26	27 MACB	28 MACB	29 MACB
30	1 JULY	2	3	4 X	5 ADO	6 MACB
8 BEGIN TOUR	9	10	11 MACB	12 ADO	13 MACB	
14	15	16	17	18 ADO	19 MACB	20 ADO
21 ADO	22	23	24	25	26 MACB	27 ADO
28 ADO	29	30	31 AUG	1 MACB	2 ADO	3 MACB
4 ADO	5	6	7	8 ADO	9 MACB	10 ADO
11 ADO	12	13	14	15	16 MACB	17 ADO

ADO - Much Ado About Nothing
MACB - Macbeth

Preshow begins 1/2 hour prior to each performance

Point Fermin Park - Every Thursday, Friday, and Saturday
807 Paseo del Mar, San Pedro, 90731
Thursday, June 20 - Saturday, July 20 - 8pm

Rancho Palos Verdes City Hall
30940 Hawthorne Blvd., RPV 90275
Sunday, July 21 - 6pm

Valley Park
Valley and Gould, Hermosa Beach 90254
Friday & Saturday, August 9 & 10 - 7pm

Wilson Park
in the Gazebo, 2200 Crenshaw Blvd, Torrance 90501
Sunday, July 28 - 6pm

Banning Park
1331 Eubank St., Wilmington 90744
Thursday - Sunday, August 1 - 4 - 7pm

Signal Hill Park
2175 Cherry Ave, Signal Hill, 90806
Thursday, August 8 - 7:30pm

Polliwog Park
1601 Manhattan Beach Blvd., Man. Bch 90266
Friday & Saturday, July 26 & 27 - 7pm

Grant Howald Park
Iris & 5th Ave, Corona Del Mar 92625
Sunday, August 11 - 6pm

Point Fermin Park - Grand Finale
807 Paseo del Mar, San Pedro, 90731
Friday & Saturday, August 16 & 17 - 7pm

schedule information

www.shakespearebythesea.org - 310.217.7596

Shakespeare by the Sea presents



Lisa Coffi PRODUCER
Mark Piatelli DIRECTOR

STAGE MANAGER **Mary Jane Villalovos**
ASSISTANT STAGE MANAGER **Stacy Davies**
SCENIC DESIGNER **Ivan Giovanettina**
COSTUME DESIGNER **Rhonda Dynice Brooks**
ASSISTANT COSTUME DESIGNER **Doug Jacobs**
CHOREOGRAPHER **Monica Miller**
PUBLICITY DIRECTOR **Erin Kampf**
ORIGINAL MUSIC **Ramon Sanchez**

June 20 - August 17, 2002

Much Ado About Nothing

Cast of Characters

Beatrice	Suzanne Dean
Hero	Jesse Runde
Antonio	David Osbourne
Leonato	Andy Kallok
Margaret	Marissa Manzanares
Ursula	Angela Allen
Watch 1/Messenger	Art Krispin
Benedick	Steven Schilling
Don Pedro	Nelson Del Rosario
Claudio	Bryan Carney
Don John	Darin Dahms
Conrade	Ty Kamerman
Boracchio	Austin Barrow
Balthasar	Ramon Sanchez
Dogberry	Brian Galyean
Verges	Katy Bartlett May
Seacole	Dylan Seal
Watch 2	Jessica Wagaman
Friar	Chris Aruffo
Sexton	Joe Lynch

Director's Notes

Much Ado About Nothing is one of Shakespeare's more popular comedies and yet it has many elements that are much ado about anything but comedy. It dramatizes betrayal and suffering, pride and deceit, public shame and redemption, blind rage and requited love. In other words, *Much Ado About Nothing* has everything to do with life in its human form. Though the play ends on a happy note with two romantic couples dancing off to be wed into marital bliss, the journey to that happy end is painfully bumpy.

My goal as a director has been to explore and capture the depths of those bumps so that when we reach the happy end, it is an arrival fully earned, an arrival filled with the satisfaction that we have experienced the travails along the way to their fullest and have come out the other end a little wiser, a bit more humble and a lot more open-hearted.

Much Ado About Nothing

Synopsis

by Diana Tallie

-Shakespeare by the Sea Volunteer

Claudio, a gentleman of the court of Don Pedro, Prince of Aragon, falls in love with Hero, daughter of Leonato, the governor of Messina. Don Pedro volunteers to court Hero disguised as Claudio and, if she responds positively, he will approach Leonato on Claudio's behalf. Don Pedro is overheard by Don John, who envies Claudio, and who decides to make mischief. He embarks upon a plan to drive the lovers apart.

Meanwhile, Leonato's niece Beatrice trades insults with another gentleman, Benedick. Both denounce love and its folly. (Methinks they do protest too much?) Don Pedro concocts a plan to trick them into actually falling in love with each other. The plot takes some wild twists and turns on its way to true love for both couples, who find that in the end all the trials and tribulations they encounter are really "much ado about nothing."

Please turn off all cell phones and pagers prior to curtain, and as a courtesy to the actors and your fellow audience members, photography and audio video recording during productions is prohibited.



Phillips Los Angeles Refinery

proudly supports
Shakespeare by the Sea
at Banning Museum



a proud sponsor of

“Shakespeare by the Sea”

Shakespeare by the Sea presents



Lisa Coffi PRODUCER

Anna Andersen DIRECTOR

STAGE MANAGER Kim Walker

SCENIC DESIGNER Ivan Giovanettina

COSTUME DESIGNER Rhonda Dynice Brooks

ASSISTANT COSTUME DESIGNER Doug Jacobs

PUBLICITY DIRECTOR Erin Kampf

FIGHT CHOREOGRAPHY Steven Schilling & Austin Barrow

MAKEUP DESIGN Jesse Runde

June 27 - August 16, 2002

Macbeth

Cast of Characters

(in order of appearance)

Witch #1	Martin Dorsla
Witch #2	Shauna Bloom
Witch#3	Betsy Moore
Duncan	Andy Kallok
Malcolm	Taso Papadakis
Siward/Bloody Captain	David Osbourne
Donalbain	Jesse Runde
Lennox	Ty Kameron
Caithness	Nelson Del Rosario
Menteith	Brian Galyean
Ross	Austin Barrow
Macbeth	Patrick Vest
Banquo	Darin Dahms
Lady Macbeth	Renee O'Connor
Macbeth Messenger	Art Krispin
Gentlewoman	Katy Bartlett May
Fleance	Eric Trevino
Porter/Murderer/Doctor	Chris Aruffo
Macduff	Kent Toussaint
Murderer/Seyton	Joe Lynch
Lady Macduff	Angela Allen
Macduff Messenger	Courtney King
Young Siward	Dylan Seal

Director's Notes

Macbeth, one of Shakespeare's later plays, is his shortest tragedy. It is a whirlwind of decisive action, an impulsive man's story played out in the blink of an eye. At the height of this madness we are told:

*To-morrow, and to-morrow, and to-morrow,
Creeps in this petty pace from day to day...
And all our yesterdays have lighted fools
The way to dusty death.*

Time is indifferent. Each man's story is eternal... and completely insignificant. Past, present and future (personified for centuries as the three furies) play fast and loose with humanity. The choices we think we make follow us through time, and time alone can dictate the consequences.

Macbeth

Synopsis

by Diana Tallie

-Shakespeare by the Sea Volunteer

Macbeth, a Scottish nobleman, is reported to King Duncan of Scotland to have great prowess on the battlefield. The King promotes Macbeth to the position of Thane of Cawdor, and orders the current Thane executed for treason and cowardice in battle.

Meanwhile, as Macbeth and his friend Banquo return from battle, they meet three witches who predict Macbeth's new title as well as tell him that he will also become king. This stirs Macbeth's ambitious dark side and he begins to have visions of murder. The King proclaims that he will spend the night at Macbeth's castle, and Macbeth and his wife hatch a murderous plot to assure Macbeth's ascent to the throne. When Macbeth begins to waver in his determination, Lady Macbeth spurs him on to murder the king as he sleeps.

The king's sons are suspected in the king's murder, and flee to England. Macbeth is crowned king, but becomes increasingly paranoid regarding his ability to remain king. He goes back to the witches to see more of his future, and his bloody deeds continue. Lady Macbeth descends into madness, and continually tries to get the king's blood off her hands. Macbeth begins to feel invincible based on the witches' latest predictions, but a strange twist of fate ultimately proves to be his undoing.



Special Thanks to the Long Beach Shakespeare Co. for loaning us one of their props and to Annie Morse for loaning us her daggers.



Please turn off all cell phones and pagers prior to curtain, and as a courtesy to the actors and your fellow audience members, photography and audio video recording during productions is prohibited.

Shakespeare by the Sea

2002 CAST OF CHARACTERS



ANGELA ALLEN (Ursula, Lady Macduff) Angela has a degree in theatre from Cal State Fullerton. After graduating she sang on a cruise ship for Holland America and then studied Shakespeare at A Noise Within Classical Theatre. She recently finished the training program at Second City LA, and has since been performing improv and sketch comedy in Los Angeles. Angela currently teaches musical theatre for children in the South Bay area.



CHRIS AРУFFO (Friar, Doctor) has been acting in the LA area since 1996. Prior to his arrival he studied theatre at Bowling Green State University in Ohio and at Boston University; he then spent two years after graduation producing and acting in Boston. Recent highlights of Chris' work include Matt in Christopher Durang's *The Marriage of Bette and Boo*, Leon in Neil Simon's *Fools*, and Audrey II in *Little Shop of Horrors*. This is Chris' debut with Shakespeare by the Sea.



AUSTIN BARROW (Boracchio, Ross) studied toward his master's degree in theatre at DePaul University in Chicago, IL. Austin's undergraduate degree is from Louisiana Tech University in Ruston, LA. Austin has worked in many respected theatrical venues, including: The Goodman and Wing & Groove in Chicago, IL; Stage Two in El Dorado, AR, and an old and decaying church in Scotland's Fringe Festival. Austin's acting credits include: *A Midsummer's Nights Dream*, *Orphans*, *Lone Star*, *Cowboy Mouth*, and many others. In Austin's extra time he enjoys design and directing.



KATY BARTLETT-MAY (Verges, Gentlewoman) Katy recently graduated from San Francisco State University with a BA in Theatre Arts. While in San Francisco, Katy worked as a House Manager for The Magic Theatre and the American Conservatory Theatre. Since graduation Katy has moved back home to Southern California to pursue an illustrious career in waitressing. Originally from San Diego, she was last seen as Joan in *Shop at Sly Corner* and Miss Prism in *The Importance of Being Earnest*. Past directing credits include *For Whom the Southern Belle Tolls*, *Wish Fulfillment*, *Sure Thing*, and *The Actor's Nightmare*.



SHAUNA BLOOM (Witch #2) Shauna is delighted to be a part of this terrific company. This is her second Witch - having recently portrayed Jennet Jourdemayne in the *Lady's Not For Burning* at the Road Theatre. Also at the Road, Shauna enjoyed a six-month run in *Tainted Blood*. Theatre credits include *After the Fall*, *Comedy of Errors* and a season touring New England with ASF's Young Company. You can catch her as a classic housewife in the independent short *The Shabbos Goy*, and as a 50's mom in the short *Breaking Out*. Shauna is also the goofy bridesmaid Rita in *Joey and Maria's Comedy Wedding*.



To subscribe: 1-877-525-NEWS

Like it live?

Check out the RAVE!
entertainment magazine
every Friday in the Daily
Breeze for a listing of local live
music, theatre, movies and more!

A proud sponsor of Music &
Shakespeare by the Sea

Daily Breeze
MAKING A DIFFERENCE

Shakespeare by the Sea's Mission is to create theatrical experiences for under-served, culturally diverse audiences in order to ignite imagination, promote literacy and artistic expression, and make theatre accessible to all.

Since 1998, Shakespeare by the Sea has played for over 22,000 people in San Pedro, the South Bay and LA County.



Supporting the arts in
San Pedro

LIBERTY

Auditorium



Congratulating
Shakespeare by the Sea
on its 5th Anniversary!



Shakespeare by the Sea

2002 CAST OF CHARACTERS



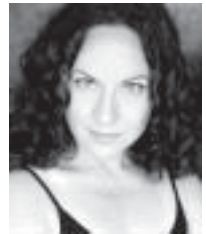
BRYAN CARNEY (Claudio) Ohio-native Bryan recently moved to LA from London where he received a "Best Actor in a supporting role" nomination portraying Bobby in *Love! Valour! Compassion!* Other British theatre credits: *The Boys in the Band*, *Approaching Zanzibar*, *Stripped*, and *Gatsby* at the Kingshead. TV credits: *Adventures of Robinhood*, *The Babes in the Wood*, *Unsolved Mysteries* and *Usual Suspect* for MTV. Film credits: *Sentimental Education*, *Swimming Pool* and soon to be released *The Devil's Tattoo* and *Perfect Timing*.



DARIN DAHMS (Don John, Banquo) This is Darin's first production with Shakespeare by the Sea. In fact, it is his first production west of the Mississippi. Darin recently moved to California, having completed an MFA in acting at the University South Carolina and an internship with The Milwaukee Repertory Theater. Darin has appeared on stage at the Red Barn Summer Theatre and Round Barn Theatre at Amish Acres. Darin also spent time in Florida working at Theatre Works of Sarasota and with Random Acts. His favorite roles include Feste in *Twelfth Night*, John Graunt in *The Living*, and Trigorin in *The Seagull*.



SUZANNE DEAN (Beatrice) Training: British American Drama Academy-Oxford, The Old Globe, Theatricum Botanicum, Shakespeare & Co, Lee Strasberg Institute, Hofstra University-NY. Some Theatre Credits: Noel Coward's *Present Laughter* & *Hay Fever*, *Les Parents Terrible*, *Look Back in Anger*, *A Coupla White Chicks Sitting Around Talking*, *Cat on a Hot Tin Roof*, *The Glass Menagerie*, *The Dresser*, *Antigone*, *Crimes of the Heart*, *Bus Stop*, *Peg & Garrick*, *All in the Timing*, *Wuthering Heights*, *The Tempest*, *As You Like It*, *A Midsummer Night's Dream*, *Hamlet*, *R&J*. Some Film & Television: *Black Dawn*, *Silk Stalkings*, *Power Rangers*, *Intimate Strangers*, *Another World*.



NELSON DEL ROSARIO (Don Pedro, Caithness) Nelson received a BA in theatre from Cal State Long Beach. He recently produced and performed in *Close Encounters of a NY Kind* (Recommended-LA Weekly) at the Elephant Theater. Other roles include Oberon in *A Midsummer Night's Dream*, Character "A" in *No One Will Be Immune*, Silvio in *Private Wars*, Johnny in *Frankie and Johnny in the Claire De Lune*, and Sebastian in the *Tempest*. Commercials include: *Home Base*, *Carta Blanca Beer*, *The Health Network*, and *Molina Medical*.



MARTIN DORSLA (1st Witch) is pleased to be making his Los Angeles debut at Shakespeare by the Sea in *Macbeth*. Hailing from Brooklyn, NY he was last seen on the New York stage in *Tartuffe* and *Angels in America*. "Till such time, till we meet again, let there be more time."



Get in the swim....

with Shakespeare by the Sea's contemporary theatre wing



Working to bring more cultural programming to San Pedro, Jerico Development helped Shakespeare by the Sea find a home at the Brown Brothers Building. Having an intimate venue meant Shakespeare by the Sea could offer a line-up of contemporary plays throughout the year. Thus, the Little Fish Theatre Co. was born. Still under the direction of Producing Artistic Director, Lisa Coffi, the Little Fish Theatre Co. began programming in January with Staged Readings. On the last Tuesday of every month at 7:30 pm Little Fish presents a simple, yet compelling theatrical experience for a nominal admission of \$5.



Brooke Wood as Maude Mix and Suzanne Dean as Hannah Mae in *A Coupla White Chicks Sitting Around Talking*.

how to live it. Partnering with the local San Pedro YMCA, Little Fish also presented *The Complete Works of William Shakespeare... Abridged* by Adam Long, Daniel Singer and Jess Winfield as a fundraiser for the San Pedro YMCA East Coast Swing group and Shakespeare by the Sea's 2002 season.

It's been an exciting and challenging beginning for the Little Fish Theatre Co. – and we've got lots more in store....



Juan Baez, Cary Jordahl & Mark Linscomb as seen in *Complete Works...Abridged*.



Little Fish Calendar of Events



Sketchy People

original work by the cast of Sketchy People
directed by Charles Hueston and Robin Cowart

Fast-paced, high-energy, laugh-out-loud comedy with *Sketchy People* - Sketch comedy with a Saturday Night Live twist and a cast of 5 that feels like 50. Don't miss it!

Friday & Saturday, June 28 & 29 ~ 8pm

Tickets: \$10 at the door.

Dark Doings at the Crossroads or Who Stole the Salad Dressing

A melodrama based on the play by Arthur L Kaser,
original adaptation by Lori Oshatz.

Join us for an evening where daring do is done and laughs abound. The salad dressing thickens as the villain is vile, the heroin is heroic, and the hero is hilarious. Find out who the mystery woman is and why she has "ahhhs" only for Augusta Kerplunk.

Thursday, Friday & Saturday,
August 9 - 24 ~ 8pm

Tickets: \$10 at the door, \$7 with a flyer (see website)

Last Tuesdays
STAGED READINGS
The last Tuesday of every month at 7:30pm

June 25 - *A Lie of the Mind* by Sam Shepard
directed by Simon Anthony

July 30 - *The World of Carl Sandburg* adapted by Norman Corwin
directed by Wendi De Barros

August 27 - *Talley's Folly* by Lanford Wilson
directed by Steven Schilling

September 24 - *Skirmishes* by Caterine Hayes
directed by Lara Macgregor

Every month the Little Fish Theatre Co. transports you to a whole new world with a whole new play. These informal staged readings have minimal props and scenic elements yet remain compelling enough to make you laugh, cry, giggle and guffaw out loud. Performances begin at 7:30pm. Tickets: \$5 at the door.

Call **310.512.6030** or check our website
www.shakespearebythesea.org for details!

Shakespeare by the Sea

2002 CAST OF CHARACTERS



BRIAN GALYEAN (Dogberry, Menteith) hails from Dallas, Texas. He went to Texas Tech University where, unlike most of his colleagues, he did not study theater, but this did not prevent him from acting. Acting is Brian's number one passion, be it on stage, film or TV. His credits include, *Taming of the Shrew*, *Romeo and Juliet*, *True West*, *The Shadow Box*, *The Subject was Roses*, and he can be seen with his comedy group, Soap Scum. Television credits include, *MTV-Undressed*, *News Radio*, *Seinfeld*, and a recurring role on *Days of Our Lives*. As for film, he's appeared in *Enemy of the State*, *A.I.*, *Human Nature*, and *Uncle*.



ANDY KALLOK (Leonato, Duncan) Andy has acted in numerous theatre productions throughout Southern California including *Spider's Web* and *An Act of the Imagination* for Palos Verdes Players, *Forty Carats*, *Ten Little Indians* and *Arsenic and Old Lace* for the Kentwood Players, and *Murder in Green Meadows* for Actors Repertory Theater. His film work includes roles in the award-winning independent productions *The Bible* and *Gun Club*, *Good Housekeeping* and *The Hook-Armed Man*.



TY KAMERMAN (Conrade, Lennox) An Iowa native, Ty is not a stranger to the stage; he has been seen on stage in Shakespeare's *The Merchant of Venice*, *Romeo and Juliet*, *A Midsummer Night's Dream*, and *Twelfth Night*, as well as *Roomies*, *American Buffalo*, and *Landscape of the Body*, to name a few. Ty is actively pursuing a career in film and theatre, and can be seen in several independent productions.



COURTNEY KING (Messenger) Courtney can often be found doing work both on and off the stage in various South Bay theatres. Most recently, she performed at Harbor College as the lead vocalist in the Spring Showcase. Earlier this year, she worked as Co-Stage Manager with her mother Melodee on *The Marriage of Bette and Boo* at the Palos Verdes Players. She also appeared as the perpetually hungry Pippa in *Spider's Web*. She is very excited to have the opportunity to be working with a theatre group based in San Pedro.



ART KRISPIN (Watch 1, Messenger) This is Art's second season with Shakespeare by the Sea. He is very excited to be a part of the 2002 season! Art has also been a part of the staged readings with the Little Fish Theatre Co. and was an understudy in the 2000 Shakespeare by the Sea season—appearing as Lysander. Art's first experience with SBTS was as an audience member of a captivating on-tour performance of *Taming of the Shrew*. Since then, he's been hooked!

Shakespeare by the Sea

2002 CAST OF CHARACTERS



JOSEPH R. LYNCH (Sexton, Seyton) The youngest of ten children, Joseph began his acting career in Hartford, CT. His first role as Lane in *The Importance of Being Earnest*, led directly to his New York stage debut as J. in *Downtown* and Lord Byron in *Bloody Poetry*. Since relocating to LA, Joseph has appeared as Dr. Bethe in *In the Matter of J. Robert Oppenheimer*, Pete in *De Donde?* and Charles Darney in *A Tale of Two Cities*. Most recently, Joseph produced and starred in *Close Encounters of a New York Kind*. Extending his film credits, he has recently co-starred in *Days of our Lives*, *Family Law* and appeared in the yet-to-be-released feature, *Say You'll Be Mine*.



MARISSA MANZANARES (Margaret) received her BFA in Theatre from the University of Cincinnati-College Conservatory of Music. CCM roles included Algernon in *The Importance of Being Earnest* and Hannah Pitt in *Angels in America parts 1&2*. She came to LA to co-produce and perform the character Ivy Buchanan in Evie Faye's *The Pages of My Diary I'd Rather Not Read*. Since then, Marissa has portrayed Rosalind in *As You Like It* and has continued her theatrical training with the Roy Hart Theatre of France and the British-American Drama Academy in Oxford England.



BETSY MOORE (Witch #3) Betsy graduated with a BA in Theatre Arts from Santa Clara University where she appeared in many roles, including Phyllis in *Twilight of the Gods* and Maria in *Lend Me a Tenor*. After graduation she went on to play the part of Jaquenetta in the Shakespeare Santa Cruz production of *Love's Labour's Lost*. She came to the Los Angeles area to appear as Connie in *Tony 'n Tina's Wedding* at the Henry Fonda. Since then she has completed a number of independent films and performed in *Murder in the Cathedral* at the Knightsbridge. In addition to her university study, Betsy has trained at A.C.T. in San Francisco and at Joan Darling's workshops.



RENEE O'CONNOR (Lady Macbeth) a native Texan, studied at the High School for the Performing and Visual Arts, and The Alley Theater in Houston before moving to LA. She studied the Meisner Technique with Iris Klein and landed the role of Gabrielle on the syndicated action series *Xena... Warrior Princess*. After spending six years in New Zealand working on *Xena*, Renee returned to the U.S. with her loving husband as a new mum to be. Playing Lady Macbeth is a dream for her, and she wants to thank the Will Geer's Theatricum Botanicum for their lectures and Shakespeare by the Sea for making Shakespeare so accessible to everyone.



**THE TAVERN WALL SALUTES
RENEE O'CONNOR!**

Shakespeare by the Sea

2002 CAST OF CHARACTERS



DAVID OSBORNE (Antonio, Siward) David is a native of Atlanta, GA who has come to Los Angeles to pursue his dream of being poor and hungry. In the actor's tradition, he has drifted from here to there and had many jobs — including BMW salesman and gravedigger. You may have seen David last year in the Long Beach Playhouse's production of *The Nerd*. His other credits include *The Fantasticks*, *As You Like It*, *The Pirates of Penzance*, *Deathtrap*, and *She Loves Me*.



TASO PAPADAKIS (Malcolm) Recent Los Angeles stage: *The Elephant Man* (Treves), Chekhov's *The Bear* (Smirnov), *Dracula* (Dr. Seward), *Aven'U'Boys* (Ed), *Tissue*, *To Live Love And Get Loaded* (Vic) at the McCadden, *Sebastiana At Dawn* (#28) directed by David Cantanzarite and for Disney at The Alex Theatre. Recent television includes *Sabrina The Teenage Witch*, *The Michael Richards Show*, *Spidergames*, *Clueless* and *City Guys* with recurring spots on *Pacific Blue* and *Malibu, CA*. He will be appearing in the feature *A Time of Fear*, to be released soon. He holds a BA in Religion from USC where he also studied theatre under Arye Gross.



JESSE RUNDE (Hero, Donalbain) This marks Jesse's first appearance in Shakespeare by the Sea. She has enjoyed performing onstage since the age of three. Her interest in all things theatrical grows daily; she has worked not only as an actor, but as a director, producer, stage manager, technician, dramaturge, and designer. Last year Jesse co-founded a fledgling theatre company that is currently producing classic plays in Orange County. Her most recent project was designing costumes and makeup for the Garden Grove Playhouse production of *The Woman in Black*—a Victorian ghost play.



RAMON SANCHEZ (Balthazar) Ramon studied music and theatre arts at San Jose State University, where he participated in experimental theatre. In his last year, he wrote and produced a political satire called *The Rise and Fall of the Third Right*. He wrote radio dramas at KSJS and became a founding member of The Ministry of Music and Theatre in Berkeley. He played rhythm guitar and keyboard for The Del Mars, an Oakland band, until 2000 and recently he wrote songs for the Lehman Engel Musical Theatre Workshop in Glendale. In addition to writing music, he's dabbled in acting as well. For Subterranean Shakespeare in Berkeley he played Antonio, Valentine, and Fabian in *Twelfth Night*, as well as Brutus and several other roles in *Coriolanus*.

Get Hooked on Shakespeare by the Sea!

These individuals are **Big Fish**
with Shakespeare by the Sea!



FLYING FISH

Alan Johnson & Liz Schindler

STARFISH

Hughes

GRUNIONS

Joan Arias

Gregory Laushine

David Piller

SAND DOLLARS

Helen Jaskoski & Dan Brown

Julie Brown & Debra Bocarski

Steve Bush

Jon & Marci Hartwell

Mary Hunker

Rob Katherman

Ken & Jane Krick

Diana Tallie

Joni & Stanley Tom

PERIWINKLE PAIRS

John Auld

George & Barbara Gleghorn

Trish Kaldenberg

Heather & Erik Larson

George Bair & Pat Collins

Brenda Sabin

Sherry Silver

Fred Vedder

Tony Vickers

Herb & Arlene Zimmer

PERIWINKLES

Susan Davis

Mr & Mrs. Kenneth A. Selander

Meria Holden

Steve Kleine & Patience Kelly

Mike & Judy Allison

Steven Anderson

Janet Ashley

Peter & Rachel Bagoye

Tom & Donna Barnes

Marty Barrera

Al & Karen Basiulis

Sonja Becker

Brian & Julie Beckman

Shelly & Christopher Beres

Agnita Britzman

Tim & Tracy Burke

Jerry & Joyce Cannon

Diana Chase

David & Linda Cheek

Paul & Joan Cirillo

Alyce M. Clark

Matt Covill & Katie Brandt

Mike & Karen Czap

Lisa De Niscia

Christina Fahy

Darlene Galindo

Otis Ginoza

Zack & Marilyn Gourley

Carl & Ruth Green

Charles & Anna Hawley

Heather Heenan

Pete & Sydni Jongbloed

Marlo Kanne

Steven & Florence Kleinjan

Heriberto & Lucia Linares

David & Diana Lindsay

Mari & Paul Loveridge

Kelly Magner

Steven Malawsky

Tom & Lee Marcellino

Diko Markarian

Shirley Marshall

Dorothy Matich

Dee McGill

Bernie & Elaine Mendes

Margo Morales

Marge & William Pawlak

Terri & Erik Peterson

Helene & Quentin Pizzini

Donna Plaisance

Margaret Pomeroy

Steven & Christine

Rosales

Lisa J. Salas

Elisa Sanchez

Brigitte Schuegraf

William & Anna Schulte

Richard & Martha

Schwartz

Helen & Fred Sebring

Sarah Slocum

Ellie Stanford

Jennifer & Ed Stapleton

Chris & Nicole Stavros

Tom Stolpman

Tom Sulyok

Sheri Thompson

Ida Weinstock

Peggy West

Joy Weston

Nan Wilson

Ann Wittkopp

You can become a **BIG Fish** in our book too!

Become a “**BIG Fish**” in our little sea by helping us continue to bring high-energy, creative, accessible theatrical productions to your community.

We are asking for your support because outdoor summer theater provides the traditional values and community spirit that are the foundation of our American way of life. Art allows us to give voice to the human spirit and offers one of the most satisfying forms of self-expression. We would be very grateful to include you among our list of 2003 **BIG Fish** donors.

Don't be a Fish out of Water - Get Hooked on Shakespeare by the Sea!

Name

I'd like to stay anonymous, please don't list me in the program.

Address

City, State, Zip

Phone

Email

Check your **BIG Fish** choice:

Blue Whale - \$5,000

Dolphin - \$2,500

Flying Fish - \$1000

Starfish - \$500

Grunion - \$250

Sand Dollar — \$100

Periwinkle Pairs - \$50

Periwinkle — \$25

Other - \$ _____

- Yes, I'd like to support SBTS this year, please contact me again next year.
- Yes, I'd like to make a 3-year commitment at this amount. Send me an invoice next year.
- Yes, I'd like to make a 5-year commitment at this amount. Send me an invoice next year.

Enclose check and mail to:
Shakespeare by the Sea - "I'm a Big Fish"
617 Elvira Ave.
Redondo Beach, CA 90277

**Art makes room for everyone
- creators and appreciators!**

For more information or questions please call 310.217.7596.

Shakespeare by the Sea

2002 CAST OF CHARACTERS



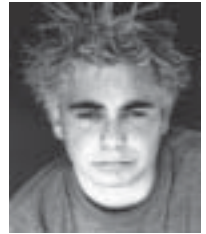
STEPHEN B. SCHILLING (Benedick) is a recent Los Angeles migrant. He has been an actor for 24 years. Holding an MFA from U of F, he went immediately into teaching and has taught actors of all ages at Duke University and New Mexico State University, as well as privately. He currently teaches movement/staged combat at Cypress College while pursuing his career as a professional film/television actor. He is a certified Actor Combatant with the Society of American Fight Directors (SAFD) and provided the broad sword fights for Macbeth. Theatre Palisades audiences may recognize him from his role as Tony Abbott in *Heaven Can Wait*. Signature roles include Lenny in *Of Mice and Men*, MacMurphy in *One Flew Over the Cuckoo's Nest*, and Johnnypateenmike in *The Cripple of Inishmaan*.



DYLAN SEAL (Seacole, Young Siward) Dylan Seal has just graduated from California State University Long Beach with a Bachelor's degree in theatre. He has been involved in several plays, dozens of showcases and at least 20 student films. This is Dylan's first professional acting job and he is thrilled to death.



ERIC TREVINO (Fleance) is a freshman at the California Academy of Mathematics and Science. This is Eric's first collaboration with Shakespeare by the Sea. He is excited to be a part of this great cast and crew. Prior stage credits include *A Midsummer Night's Dream*, *Krazy Kamp: The Musical*, and *Wagon Wheels West* at Lennox Middle School. When Eric is not involved with acting he enjoys soccer, basketball, and learning to play his electric guitar.



KENT TOUSSAINT (Macduff) makes his first appearance at Shakespeare by the Sea as Macduff, a character he has always wanted to play. You might recognize Kent from appearances on the television show *Boston Public*, commercials for Hallmark, Ford; Mercury Sable and IceHouse Beer, as well as many others. Kent recently worked with Director Anna Andersen on *The Curate Shakespeare As You Like It* in the role of The Curate at the Palos Verdes Playhouse and won the award of Best Lead Actor at the PVP yearly awards ceremony. His creative passion is regularly satiated by performing with the Los Angeles based LOOSELY BASED Comedy Improv troupe, which he helped create and with which he produces and performs.



Shakespeare by the Sea

2002 CAST OF CHARACTERS



PATRICK VEST (Macbeth) continues to work his way through Shakespeare's canon, this being the nineteenth Shakespearean production he's done. His favorite roles include Prince Hal, Petruchio, Jaques, Malvolio, and Cloten. He has also created and toured with a one-man show about Henry David Thoreau, which he is currently making into a film. It was Thoreau who said: "If one advances confidently in the direction of his dreams and endeavors to live the life that he has imagined, he will meet with a success unexpected in common hours."



JESSICA WAGAMAN (Watch 2) Jessica's first stage performance was in 1989 in Villisca, Iowa's community theatre performance of *Gypsy* in which she played Baby June. After that she appeared in many school plays including *Cinderella*. She starred in *Vaudeville VHS* in the musical medley *Spoon River Anthology*, appeared in *Aria De Capo* as Columbine, and in *Trouble in Tumbleweed* as the Damsel in Distress. In 2001, she appeared in her first professional production as Miranda Kerwyn in *Roomies* at the Ingersol Dinner Theatre. Jessica currently resides in Redondo Beach and works at I-Wonder Studios in Culver City.

Shakespeare by the Sea

2002 PRODUCTION TEAM



LISA COFFI (Producing Artistic Director) is the founding member of Shakespeare by the Sea. She holds an MFA in Theatre Management from CSU, Long Beach and a BFA in Two-Dimensional Art from CSU, Sacramento. Over the past five years, she's established Shakespeare by the Sea as a non-profit organization, and is proud to be expanding San Pedro's theatrical offerings with the newly formed contemporary theatre wing - Little Fish Theatre Co. which has found a home in the Brown Bros. Building. Along with producing and administering the Shakespeare by the Sea and Little Fish Theatre Co. programs, Lisa works as a freelance graphic designer around the South Bay.



JENNY MYERS (Development Director) This is Jenny's first year working on the fundraising and development side after being an actor in last year's SBTS season. She graduated from University of Florida's College of Journalism and began working in publicity for NBC in New York. Since her move to the West coast, she has worked in public relations for The LJ Group and is currently pursuing an acting career. Million thanks to Lisa for teaching me a great deal and for producing such a magical gift.

Shakespeare by the Sea 2002 PRODUCTION TEAM



ERIN KAMPF (Publicity Director) A transplant from Vancouver, Canada, Erin has been living in Southern California for three years. After taking a break from Shakespeare due to a slight overdose during a B.A. in English Literature, she is thrilled to be back in the world of the Bard. When not busy promoting Shakespeare by the Sea, Erin enjoys hiking, reading, and traveling, having traveled around North America, visited Europe and Asia and lived in South America. This is her first year with Shakespeare by the Sea.



ANNA ANDERSEN (Director - *Macbeth*) This is Anna's first summer season with Shakespeare by the Sea, and it feels like home. She began her theatre career as a critically acclaimed rabbit in *Snow White and the Seven Dwarfs*. Other favorite roles include Kate in *Taming of the Shrew*, directed by Kate Geer, and Hesther in *Equus*, directed by Joanne Gordon. She credits these strong and beautiful women for inspiring her shift in focus to directing. As a director, she is most proud of last summer's production of *The Curate Shakespeare As You Like It*, and this year's Shakespeare outreach program, Shaking it up with Shakespeare for Shakespeare by the Sea.



MARK PIATELLI (Director - *Much Ado*) is the Performing Art Director for the Artists Reaching Kids in Long Beach. He founded the ARK Comedy Troupe, and created The ARK Players where he recently directed *Little Shop of Horrors*. Other directing credits include *The Odd Couple* (female version), *Guys and Dolls*, Eugene O'Neil's *In the Zone*, *The Diversity Advantage* (a training video) and several original plays. Mark has acted in many regional theatres, as well as in television and film. Some credits include Willamstown Theater, The Geva Theater in Rochester, NY, The Tony Award nominated Willow Cabin Theater Company in New York City, *The Larry Sanders Show*, and *Star Trek: Deep Space Nine*. He toured Europe with Robert Wilson's production of *Hamletmachine* and sang his way around the world with the Yale Whiffenpoofs.



MARY JANE VILLALOVOS (Stage Manager - *Much Ado*) Since last season, Mary Jane (MJ) has been working on various shows: *Starmites*, *The Council of 30*, *Student One Acts*, *Catholic School Girls*, and *Romeo and Juliet* as a light designer, technician and programmer. When she is not involved in a show she is also a full time student studying Art, hoping one day to be able to draw blissfully from home and make a living from it.



Shakespeare by the Sea 2002 PRODUCTION TEAM



KIM WALKER (Stage Manager - *Macbeth*) Kim came to the company as a volunteer in April and was quickly elevated to the part of Princess Stage Manager. Other roles include systems engineering for Boeing, house sitting and chauffeur to LAX for friends. She spent her youth in San Diego where her first Shakespearean experience was as Oberon's Attendant in *A Midsummer Night's Dream* at the age of 6. Since the acting bug bit her, she has performed in numerous plays and musicals ranging in parts from trees to leads, most recently in Moliere's *Tartuffe* and as Sally in *Me and My Girl*. Kim has a BSEE from RPI and graduated with a concentration/minor in Acting.



STACY DAVIES (Assistant Stage Manager - *Much Ado*) A waitress at the banquet of life no longer, the aged, versatile Ms. Davies flits about from thing to thing, dabbling in whatever tickles her fancy, turning all into pyrite. She's jolly thrilled to be co-mingling with the Shakespearean players again this summer and wishes to remind unspecified bons vivants that "there are no good girls gone wrong, merely bad girls found out." More thinly stitched together prose penned by SD can be found by logging on to www.ocweekly.com and entering her name into the search field.



IVAN GIOVANETTINA (Scenic Designer) Originally from Switzerland, Ivan received a BA in Fine Arts for theatre design from the University of Texas at Austin. He also worked as a set designer in Chicago, where he obtained an MFA in Scenic Design from DePaul University. Since moving to Los Angeles, Ivan has been working as an Art Director for television as well as scenic designer for various theatrical projects. Some of his credits include *Six Characters in Search of An Author*, *Once on this Island*, and *The Music Man*.



RONDA DYNICE BROOKS (Costume Designer) Ronda received her MFA in Costume Design from CSU, Long Beach. This is her second season with Shakespeare by the Sea. Last year she assisted the company on *the Tempest* and *As You Like It*. Ronda has designed costumes for *Factory Girls*, *Puccini Project*, *Godspell*, *Grapes of Wrath*, *Quack* and *Jacques Brel*. So far this year she designed the costumes for productions of *Little Shop of Horrors* for ARK Players in Long Beach and *Lucia Mad* for The 24th Street Theater in Los Angeles.

DOUG JACOBS (Assistant Costume Designer) This is Doug's second year working with Lisa and the gang at SBTS. Last year he designed the costumes for *As You Like It* and *The Tempest*. He has designed for such LA-based companies as The Elephant Theatre Co., Theatre Neo, Wildebeest Theatre Co., and The Knightsbridge. Before that, he graduated from SUNY Oswego with degrees in Theatre and English. And before that he played the White Rabbit in *Alice in Wonderland* (circa 1975).

Shakespeare by the Sea 2002 PRODUCTION TEAM



MONICA MILLER (Choreographer - *Much Ado*) holds a BA in dance from Loyola Marymount University. She has been choreographing for studios, schools and theatres throughout the Los Angeles and Orange County areas for the past seven years. As a performer herself, Monica's favorite roles include dance captain in *Grease* and Margarita, the tango dancer in *Evita*. She also has plenty of experience dancing for local theme parks in legendary shows and parades. Currently, Monica is dancing for John West's company, The Valyermo Dancers, and keeping busy with the audition circuit. Monica also teaches dance in Manhattan Beach.



A dream itself is but a shadow Hamlet.
- William Shakespeare

Let Era Golden West Realty help you with your dream



ERA Golden West Realty
1517 S. Gaffey St., San Pedro CA
310-548-2881

**Do you want to get involved with
Shakespeare by the Sea or Little Fish Theatre Co?
Email erin@shakespearebythesea.org
or call 310.217.7596**

Shakespeare by the Sea 2002 Programs

TheatreXperience at the Performing Arts Firehouse



A Performing Arts Summer Day Camp for kids ages 10-16!
Learn how to create your own show! Act, sing, dance,
make costumes and build sets! **It's FUN!**

For more information call Anna Andersen, Program Director, at
310.217.7596.

Sign up today! 4-week summer sessions - only \$100

June 24 - July 19, 2002 (Final Performance - Wed, July 17, 6pm)

July 29 - Aug 23, 2002 (Final Performance - Wed, Aug 21, 6pm)

Monday - Friday, 9am - 3pm

TheatreXperience is a Shakespeare by the Sea and Grand Vision Foundation program
and is sponsored by



Phillips Los Angeles Refinery



SHAKING IT UP WITH SHAKESPEARE



Shakespeare by the Sea's middle
and high school touring outreach
program.

The user-friendly way to get introduced to Shakespeare!

Call now to have Shaking it up with
Shakespeare visit your school

Still available to tour!

Call us to schedule a date
310.217.7596

Sponsored by
the Weingart Foundation and
4th District Supervisor Don Knabe's Art's and Education Program.



Shakespeare by the Sea 2002 Season Sponsors



Daily Breeze
MAKING A DIFFERENCE



Phillips Los Angeles Refinery



ERA GOLDENWEST REALTY



KAISER PERMANENTE



Shakespeare by the Sea 2002 Tour Sponsors



Hermosa Arts Foundation
Friends of Hermosa Beach Community Center Foundation



RANCHO PALOS VERDES



Friends of Banning Museum

and the City of Torrance Cultural Services Division

THANK YOU!



Take a Chance

with Shakespeare by the Sea

\$5 Raffle Tickets available at any performance.

GRAND PRIZES

One Year Free DIRECTV! (installation included) - courtesy of Hughes/DIRECTV
6 Field Level Dodgers Tix from SBTS's own hero - Nissen Davis
\$350 (6) person sail Pacific Sailing Charter & Instruction

2ND PLACE PRIZES

Disney's CA Adventure - 2 tix
Six Flags Magic Mountain - 2 tix
San Diego Shakespeare Experience:
2 tix to The Globe Theatre with
a 2 night stay at Doubletree Hotel

3RD PLACE PRIZES

Carmel Shakespeare Festival - 4 tix
Circuit City - \$100 Gift Cert.
Civic Light Opera of South Bay -
4 tix to "A Funny Thing.."
Marina Sailing - Sailing Lessons for two
35mm Camera from the Photo Center

4TH PLACE PRIZES* - A WINNER IS AWARDED EACH NIGHT

Actors Repertory Theatre - 2 tix
Ahmanson Theatre/Mark Taper Forum - 2 tix
Babouch Moroccan Restaurant Gift Cert.
Best Buy Gift Cert.
California Pizza Kitchen - Dinner for two
Chicago for Ribs - Feast for 2 Ribbiticate
General Cinema passes
Glamour Shots Gift Cert.
Griffith Park Farms - \$60 Riding Lesson
"Hello Dolly" - Torrance Cultural Services Div. - Family 4pk
Hilton Port of Los Angeles/San Pedro - one night stay
LA Theatre Works - 2 tix
Little Fish Theatre Co. - 2 tix
Long Beach Playhouse - 2 tix
L'Opera Gift Cert.
Los Angeles Zoo - 2 tix

Marie Callender's - Sunday Brunch for 4
Marmalade Cafe Gift Cert.
Mimi's Cafe Gift Cert.
Palos Verdes Players - 2 tix
Papadakis Gift Cert.
South Coast Repertory - 2 tix to "Major Barbara"
"South Pacific" - Torrance Cultural Services Div. - 2 tix
TGI Fridays Gift Cert.
Vince's Spaghetti - Dinner for 2
Will Geer's Theatricum Botanicum - 2 tix
Yard House Restaurant Gift Cert.
Wine from "La Cooperative des Garagistes"

I'm a Winner!
SHAKESPEARE BY THE SEA 2002



*Fourth Place Ticket Holders MUST be present to WIN!